

2022 Block of the Month: It's Christmas All Year Long

Block #10: Ornaments

Instructions:

You will need the following fabrics:

Fabric A: Background fabric

Fabric B: Ornament Stem

Fabric C: Ornament Cap

Fabric D - I: Main and/or Accent for Ornaments 1 - 5



Cutting:

For each ornament, cut the fabric in measurements given.

| Ornament # | Ornament Size | Fabric A | Fabric D |
|------------|-----------------|-----------------------------------------------------------------------------|-----------------|
| | | Background | #1 Main |
| 1 | 3 1/2" x 6 1/2" | Four at 1 1/2" Square; Two at 1 1/2" x 2 1/2"; One at 1 1/2" x 3 1/2" | 3 1/2" x 3 1/2" |

| Ornament # | Ornament Size | Fabric A | Fabric E |
|------------|-----------------|--------------------------------------------|-----------------|
| | | Background | #2 Main |
| 2 | 3 1/2" x 6 1/2" | Four at 1 1/2" Square; Two at 2" Square | 3 1/2" x 5 1/2" |

| Ornament # | Ornament Size | Fabric A | Fabric F | Fabric G |
|------------|-----------------|----------------------------------------------|------------------------|-----------------|
| | | Background | #3 Main | #3 Accent |
| 3 | 6 1/2" x 6 1/2" | Four at 2 1/2" Square; Two at 1 1/2" x 3" | Two at 2 1/2" x 6 1/2" | 1 1/2" x 6 1/2" |

| Ornament # | Ornament Size | Fabric A | Fabric H |
|------------|-----------------|----------------------------------------------------------------------|-----------------|
| | | Background | #4 Main |
| 4 | 3 1/2" x 6 1/2" | Two at 1 1/2" Square; Two at 2" Square; Two at 1 1/2" x 2 1/2" | 3 1/2" x 4 1/2" |

| Ornament # | Ornament Size | Fabric A | Fabric I |
|------------|-----------------|-----------------------------------------------------------------------------|-----------------|
| | | Background | #5 Main |
| 5 | 3 1/2" x 6 1/2" | Four at 1 1/2" Square; Two at 1 1/2" x 2 1/2"; One at 1 1/2" x 3 1/2" | 3 1/2" x 3 1/2" |

| | Fabric A | Fabric B | Fabric C |
|-----------|-------------------------|-----------------|--------------------|
| | Background | Stem | Cap |
| For Stems | Two at 3/4" x 10" | One at 1" x 10" | |
| For Caps | | | One at 1" x 7 1/2" |
| Sashing | Six at 1 1/2" x 6 1/2". | | |

Sewing:

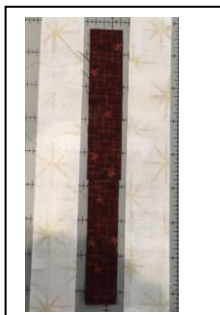
Step 1: Use $\frac{1}{4}$ " seams throughout.

Step 2: The Stitch and Flip Method will be used for each ornament. Draw a line on the diagonal on the Fabric A squares. Layer right sides together (RST) the ornament main fabric piece with the Fabric A squares. Stitch on the line. Cut $\frac{1}{4}$ " away from the sewn line. Press.

Note: The ornaments will have different size Fabric A squares. Note the direction of the stitch lines. The Stitch and Flip Method will be referenced as S&FM for ease in the directions.

Stems and Caps:

Sew the Fabric B stem piece between the two Fabric A pieces. You now have a piece which is approximately $1 \frac{1}{2}$ " x 10". Cut this stem piece into three $1 \frac{1}{2}$ " x 2" pieces and two $1 \frac{1}{2}$ " x 1" pieces. Cut the Fabric C cap piece into five 1 " x $1 \frac{1}{2}$ " pieces. Sew a Fabric C cap piece to the end of a Fabric A/B stem piece. Set aside these stem/cap pieces to use when sewing the ornaments. For each ornament, the stem/cap pieces will measure as follows: #1, #4 and #5 - $1 \frac{1}{2}$ " x $2 \frac{1}{2}$ "; #2, #3 - $1 \frac{1}{2}$ " x $1 \frac{1}{2}$ ".



Ornament #1:

Using S&FM, sew four 1 ½" Fabric A squares to the Fabric D main piece. Sew two Fabric A 1 ½" x 2 ½" pieces to each side of a 1 ½" x 2 ½" stem/cap piece. Sew these two pieces with a Fabric A 1 ½" x 3 ½" piece as shown. Ornament #1 will measure 3 ½" x 6 ½".



Ornament #2:

Using S&FM, sew two 1 ½" Fabric A squares to the top and two 2" Fabric A squares to the bottom of the Fabric E main piece. Sew two Fabric A 1 ½" squares to each side of a 1 ½" x 1 ½" stem/cap piece. Sew these two pieces together as shown. Ornament #2 will measure 3 ½" x 6 ½".



Ornament #3:

Sew to Fabric F main pieces on either side of the Fabric G accent piece. Using S&FM, sew the four 2 ½" squares to the main piece. Sew two Fabric A 1 ½" x 3" pieces to each side of a 1 ½" x 1 ½" stem/cap piece. Sew these two pieces together as shown. Ornament #3 will measure 6 ½" x 6 ½".

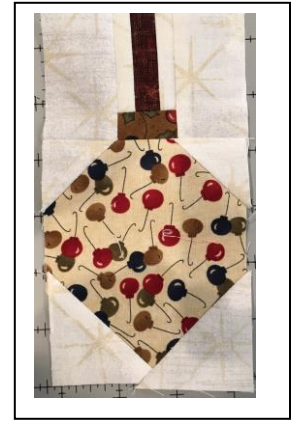


Option for Ornament #3: Use the 2 ½" Fabric A squares for the S&FM. Sew on a line which is marked 2 ½" in and 1 ½" down. Cut ¼" away from stitch line. Press. Trim the ornament main piece to 5 ½" x 6 ½". Continue with adding the stem/cap piece.



Ornament #4:

Using S&FM, sew two 1 ½" Fabric A squares to the top and two 2" Fabric A squares to the bottom of the Fabric H main piece. Sew two Fabric A 1 ½" x 2 ½" pieces to each side of a 1 ½" x 2 ½" stem/cap piece. Sew these two pieces together as shown. Ornament #4 will measure 3 ½" x 6 ½".



Ornament #5:

Following the instructions from Ornament #1 using the Fabric I main fabric. Ornament #5 will measure 3 ½" x 6 ½".



Sew the sashing strips between each ornament and on either end of the block. See photo.



Block #10, Ornaments, will measure 6 ½" by 24 ½" unfinished and 6" by 24" in the quilt.

